



Mechanical Control Solutions

www.maya-sa.com



MAYASA
TURNING AND MILLING

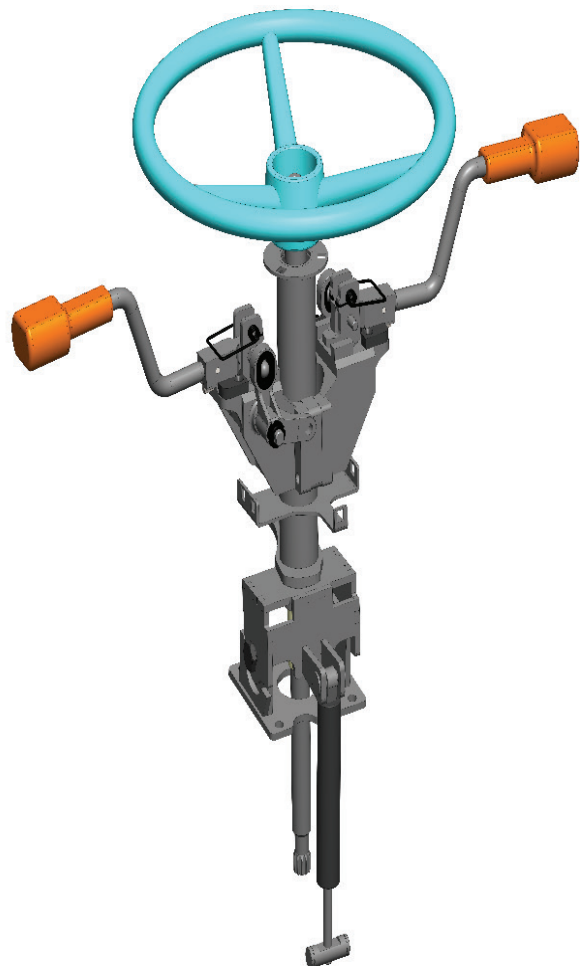




Steering Systems

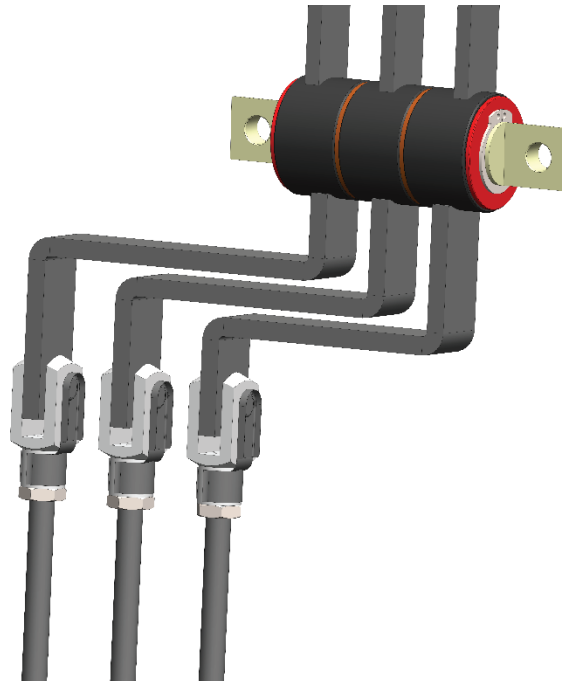
Tilting and telescoping
Single lever adjustable
Configurable to customers'
specific application
Modular cluster and switch board
Tested and validated for

- Durability
- Extreme load
- Environment
- Vibration



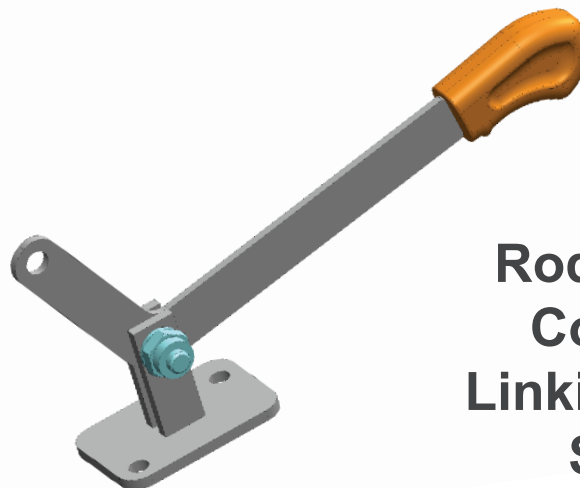
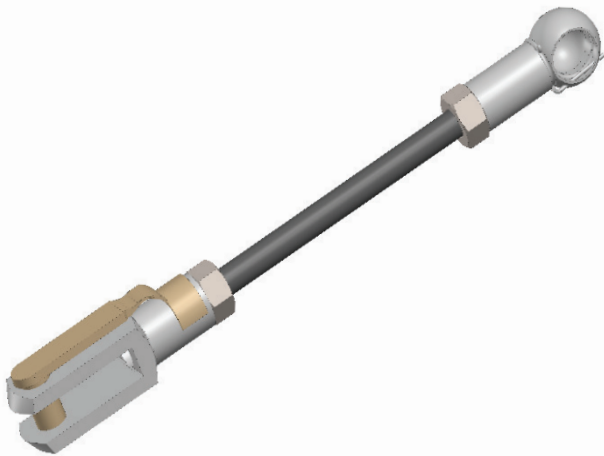
Motion Controls

Foot throttle
Parking brake
PTO lever
ELC lever
Gearshaft lever
Accelerator pedal
Clutch pedal
Brake pedal



Control Cables and clevises

Forrk Clevises



Ball joints

Ball studs

Rod ends

Rod assemblies

Control cables

Linking elements

Special parts



Corporate Overview

MAYASA is an OEM driven company for customized control systems for almost every application in the industry

Quick Facts

Since 2005

120 Employees / 12 Design - Engineers

2.500 m² production site

Supplier to more than 25 OEMs around the world

Diverse industry experience

ISO/TS 16949 compliance in progress



One of the strongest players in the Turkish market specialized in design and manufacture of domestic and global motor vehicle builders.

Capabilities

Design, produce and assembly

Advanced Product Quality

Planning (APQP)

Continuous improvement

Testing and validation

Supplier management

IT based order management

Resources

Design, Engineering

Toolmaking

Machining

Tube & Profile Bending

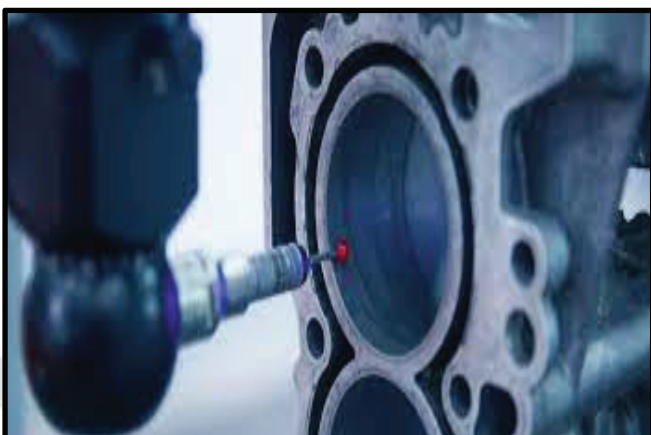
Laser Cutting

Robot Welding

Injection Molding

Assembly Verification

CMM Testing - Validation



As a supplier, we work for

Türk Traktör

 **BASAK**


TÜMOSAN


ERKUNT
ÇİFTÇİNİN GÜCÜ

HİDROMEK




ÇUKUROVA





Mahindra
Rise.



NILFISK


CARRARO
TRACTOR PEOPLE





Manufacturing Headquarters

Mayasa-sa, Inc.

Demirkapı Cad. Sayac Ishani
Sayac Work Center
B Block N3/8

Ph: 0090 212 549 0275
Fax: 0090 212 549 6664

volkan@maya-sa.com

Office Headquarters

Tornado Group, Inc.

IOSB Tormak Sanayi Sitesi
N Blok No:1-3
Ikitelli Basaksehir
Istanbul

Ph: 0090 212 671 88 00
Fax: 0090 212 671 88 77

info@tornadogassprings.com

